

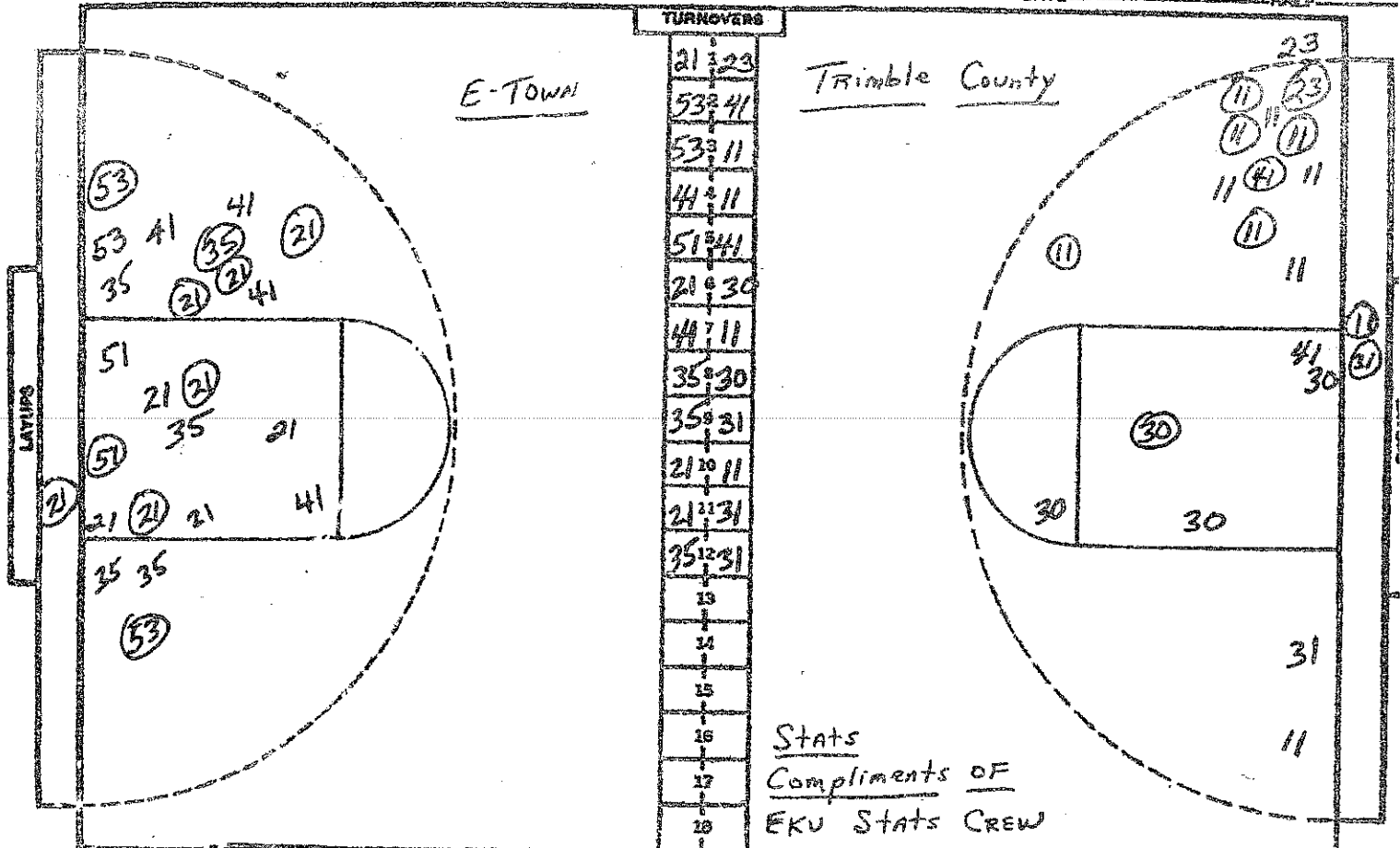
CAGE CHART

Elizabethtown

Triable County

Mar. 25, 1981

157



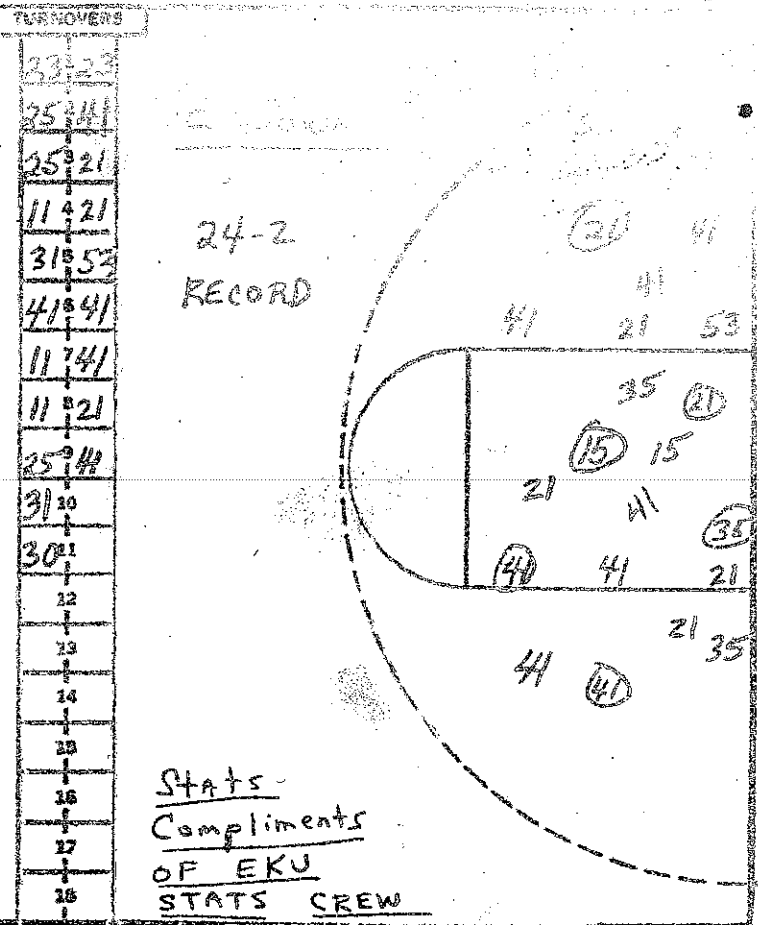
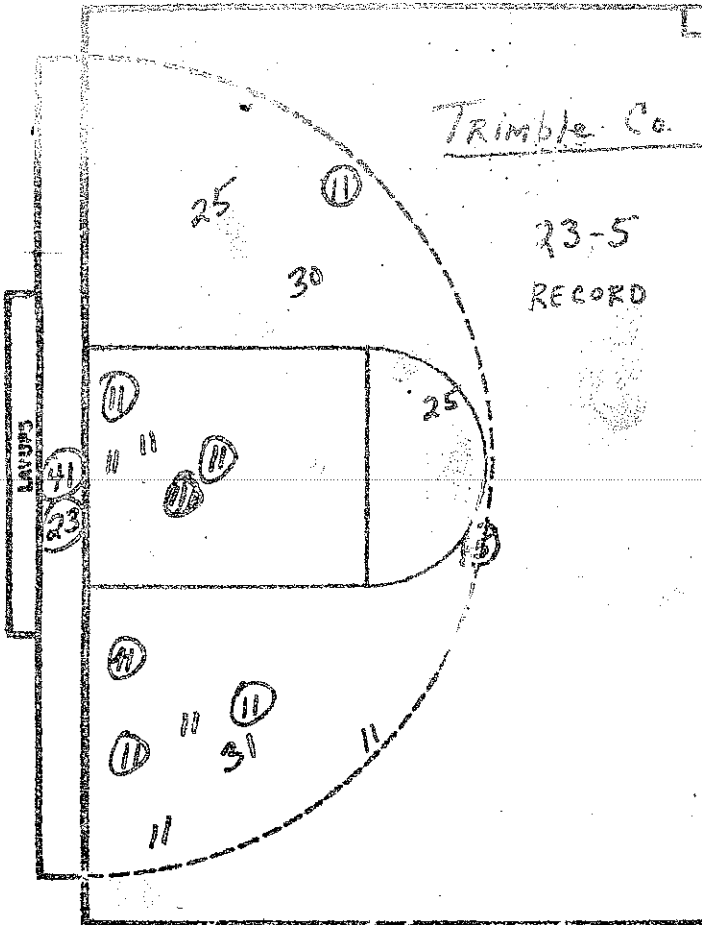
NO.	E-TOWN	FG-PGA	FT-FTA	RD	P	TP	A
G 21	Sandy Lackey	6-11	3-3	3	0	15	0
33	Reina Starks	-	DNP				
F 41	Dori Cook	0-3	0-1	3	1	0	0
C 35	Carla English	1-6	1-2	6	1	3	0
G 5	Nina Parrish	0-0	0-0	0	3	0	0
25	Kathy Taylor	-	DNP				
43	Sadie Vaughn	-	DNP				
F 53	Deneene Woods	2-2	0-0	2	0	4	1
24	M. Henderson	-	DNP				
23	Joanne Cecil	-	DNP				
13	Jill Chittick	-	DNP				
51	Pam Blake	1-4	0-0	2	0	2	0
		-	-				
		-	-	2	D.B.		
<b>TOTALS</b>		<b>10-26</b>	<b>4-6</b>	<b>18</b>	<b>5</b>	<b>24</b>	<b>1</b>

NO.	TRIMBLE	FG-PGA	FT-FTA	RD	P	TP	A
C 11	Marcia Heney	6-11	0-1	2	2	12	0
G 30	Debbie Delph	1-4	0-0	1	1	2	3
G 31	Holly Kreis	1-2	1-2	1	0	3	1
F 23	Penny Taylor	1-2	0-0	1	2	2	0
F 41	Leigh Staples	1-2	0-0	4	1	2	0
25	Jill Powell	-	DNP				
45	Vanessa Barron	-	DNP				
35	Tammy Taylor	-	DNP				
22	Missy Jeffries	-	DNP				
33	Jan Powell	-	DNP				
21	Amy Andrew	-	DNP				
10	Traci Brierly	-	DNP				
		-	-				
		-	-	2	D.B.		
<b>TOTALS</b>		<b>10-21</b>	<b>1-3</b>	<b>11</b>	<b>6</b>	<b>21</b>	<b>4</b>

PERCENTS 38.5 66.7 1 TEAM REBOUNDS (NOT IN TOTAL)

PERCENTS 47.6 33.3 1 TEAM REBOUNDS (NOT IN TOTAL)

SCORE BY HALVES E-TOWN 11-13=24 Trimble Co. 13-8=21  
 OFFICIALS JAN BAKER + Wally BEVINS  
 2800 -L



TURNS

23-23
25-41
25-21
11-21
31-52
41-41
11-41
11-21
25-41
31-10
30-21
12
13
14
15
16
17
18

NO.	TRIMBLE	FG-FGA	FT-FTA	REB	P	TP	A
C 11	Marcia Haney	12-22	0-1	8	3	24	1
G 30	Debbie Delph	1-5	0-0	1	3	2	4
G 31	Holly Kreis	1-3	1-2	2	4	3	1
F 23	Penny Taylor	2-3	0-0	2	5	4	1
F 41	Leigh Staples	3-4	0-0	7	3	6	0
25	Jill Powell	1-3	0-0	0	1	2	0
45	Vanessa Barron	-	DNP				
35	Tammy Taylor	-	DNP				
22	Misry Jeffries	-	DNP				
33	Jen Powell	-	DNP				
21	Amy Andrew	-	DNP				
10	Traci Brierly	-	DNP				
		-	-				
		-	-	2	D.B.		
TOTALS		20-40	1-3	22	19	41	7

NO.	E-TOWN	FG-FGA	FT-FTA	REB	P	TP
G 21	Sandy Lackey	9-19	4-8	10	0	22
33	Regina Starks	-	DNP			
F 41	Lori Cook	2-11	1-4	6	1	5
C 35	Carla English	2-9	1-3	10	2	5
G 15	Nina Parrish	1-2	1-1	1	3	3
25	Kathy Taylor	0-0	DNP	0	0	0
43	Sallie Vaughn	-	DNP			
F 53	Deneene Woods	3-6	2-2	3	0	8
24	M. Henderson	-	DNP			
23	Joanne Cecil	-	DNP			
13	Jill Chittick	-	DNP			
51	Pam Blake	1-4	0-0	2	0	2
		-	-			
		-	-	2	D.B.	
TOTALS		18-51	9-18	34	6	45

PERCENTS 50.0 33.3 4 TEAM REBOUNDS (NOT IN TOTALS)

PERCENTS 35.3 50.0 4 TEAM REBOUNDS (NOT IN TOTALS)

SCORE BY HALVES  
 OFFICIALS: JAN BAKER + JALLY BEVINS  
 ATTENDANCE: 4500 EST.

Trimble Co. 13-8-8-12 = 41  
 E-TOWN 11-13-13-8 = 45